

# ApexSQL Script 2011

## for SQL Server

Script and package SQL databases



Data Sheet

ApexSQL Script allows you to script both objects and data from various databases simultaneously. Its multiple output options and automation capabilities facilitate database migrations

"Great tool - we use ApexSQL Script for every production build at our company and it is a key component of our build process."

**Max Pilipis**

Sr. Software Engineer  
Academic Management  
Services

"I love the product and it is one of the most valuable tools we use to maintain and update our databases."

**David Raschka**

Vice President  
Reliant Business Systems, Inc."

"This is the best program for managing data transfers from my dev server to the production server, since i do not have direct access to the same SQL tools onto the server...GOOD WORK!"

**Justin Daniels**

Origin Seminars

## Highlights

### Database scripting

Script both objects and data from various databases simultaneously

### Selective scripting

Specify processing criteria. Script some, most or all data and objects

### Multiple output options

Script to a single SQL file, executable package or a .NET solution

### Automation

Schedule migrations unattended, using the command line interface

### Database versioning

Commit a specific database version or label directly to source control

### Change propagation

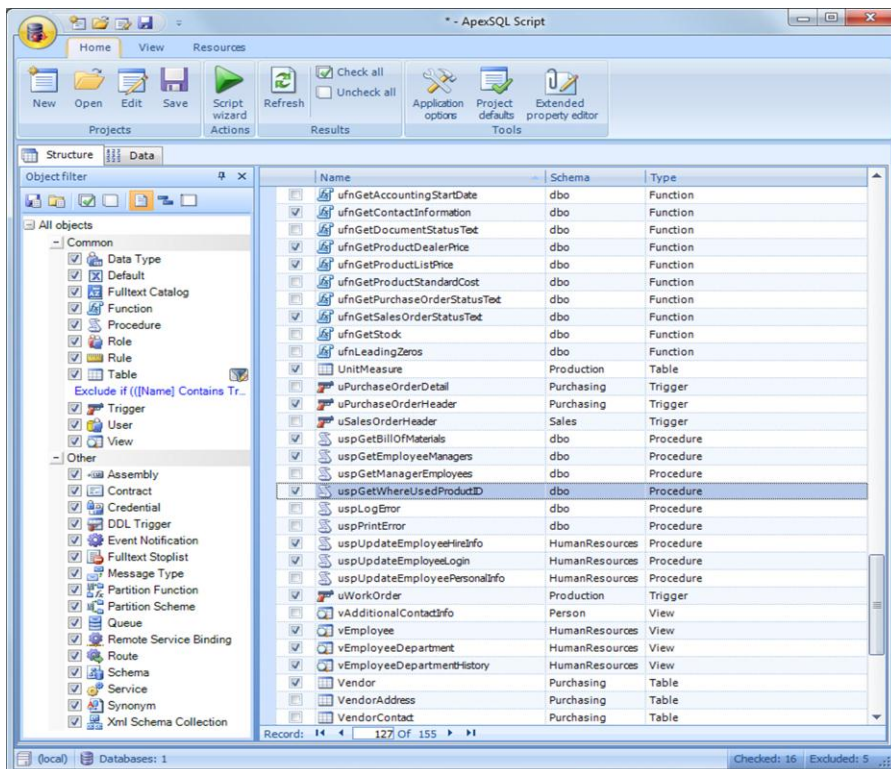
Promote changes from your Development to you Test or Production environments

### Error-free migrations

Ensure that databases are migrated without problems or errors using proprietary dependency analysis algorithms

### Native support for the most popular source control providers

Including Visual Source Safe, Subversion, Team foundation Server and SourceGear Vault



ApexSQL, LLC  
11312 US 15-501 N,  
suite 107-212  
Chapel Hill, NC, 27517

1.866.665.5500  
1.919.968.8444  
[sales@apexsql.com](mailto:sales@apexsql.com)  
[www.apexsql.com](http://www.apexsql.com)

**ApexSQL**  
Data driven

# ApexSQL Script 2011

## for SQL Server

Script and package SQL databases



## Advanced Features

### Simultaneous processing

Combine objects and data from multiple databases in a single script, installer or solution

### Database installers

Deploy databases in a single click using executable installers

### Deployment packages

Seamlessly port databases to a .NET solution

### Database builds

Export databases directly to version control

### Accurate dependencies

Recognize all object interdependencies, even those that even SQL Server itself fails to identify

### Pre-impact analysis

Review the migration script before it is executed

### Transparent decryption

Script encrypted objects seamlessly

### Object selection

Selectively limit the objects that will be processed with advanced visual filtering

### Object selection

Selectively limit the objects that will be processed with advanced visual filtering

### Data filtering

Selectively limit the objects that will be processed with advanced visual filtering

### Column level scripting

Save your options to a project for instant re-execution

### Custom script support

Augment the deployment script with your own pre or post synchronization scripts

### Smart schema mapping

Compare objects across different users using schema mapping

### Extended properties editor

Leverage the extended properties that already exist in your database to add detail and context to your objects. Edit these descriptions inline without leaving the tool

### Repeatable sessions

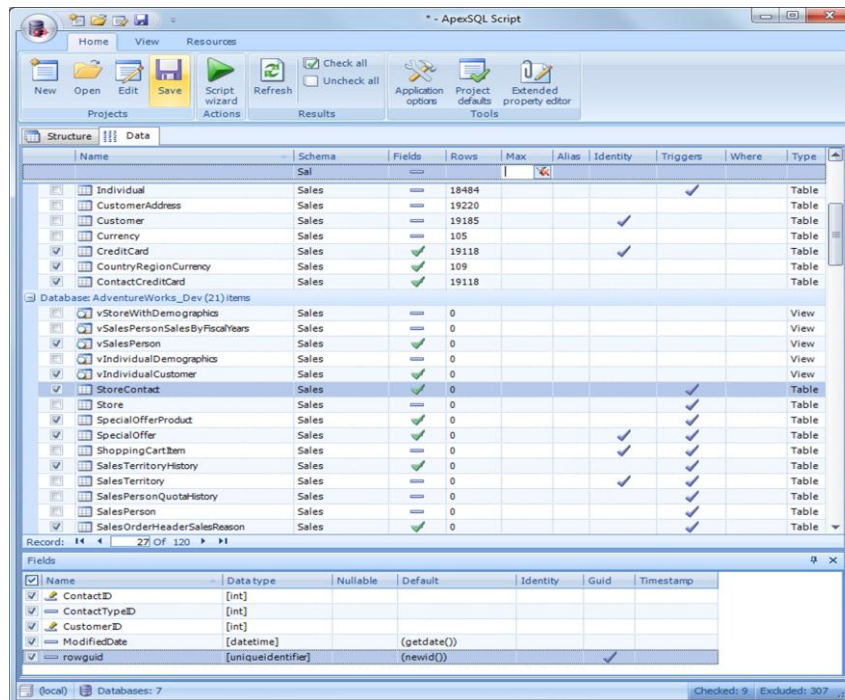
Save your options to a project for instant re-execution

### Seamless source control integration

Native support for Microsoft Visual SourceSafe, Subversion, Team Foundation Server and SourceGear Vault

### Full SQL Server version support

Script objects and data stored in SQL Denali, SQL 2008 R2, SQL 2008, SQL 2005, and SQL 2000 databases



[Download](http://www.apexsql.com) a **FREE** Evaluation today at [www.apexsql.com](http://www.apexsql.com)

ApexSQL, LLC  
11312 US 15-501 N,  
suite 107-212  
Chapel Hill, NC, 27517

1.866.665.5500  
1.919.968.8444  
[sales@apexsql.com](mailto:sales@apexsql.com)  
[www.apexsql.com](http://www.apexsql.com)

 **ApexSQL**  
Data driven